

**Chevrolet/GMC, 6.6L : D, 2006+, A Pump, Rear Port**

Bolt Packages:

Bracket	711396	(Inc. item 3, 9, 12, 13)
Idler	711738	(Inc. item 2, 4, 10, 11, 15)
Crank pulley	None	
Tensioner	None	

Bracket Assy.	None
Issue Date	9-29-05
Revision Date	NC 9-25-05

Item	Part No.	Description
1.	710099	Pump mount bracket
2.	711009	Idler bushing, .875" flange width
3.	110188	M10 x 80 x 1.5 Socket head bolt
4.	711461	Idler bushing, .210" flange width
5.	710936	Pump plate
6.	740242	Idler pulley
7.	*	Pump / Rear port
8.	742016	Clutch
9.	110217	M10 x 70 x 1.5 Bolt
10.	110487	M10 x 120 x 1.5 Bolt
11.	110210	M10 x 50 x 1.5 Bolt
12.	110101	M10 x 1.5 Lock nut
13.	110395	3/8-16 x 1 Socket head bolt
14.	110425	3/8-16 x 1 1/4 Bolt
15.	110676	3/8 Flat washer
16.	740266	Belt/Poly Cog 1380K6BK

**FIG. 1**  
**BELT DIAGRAM**

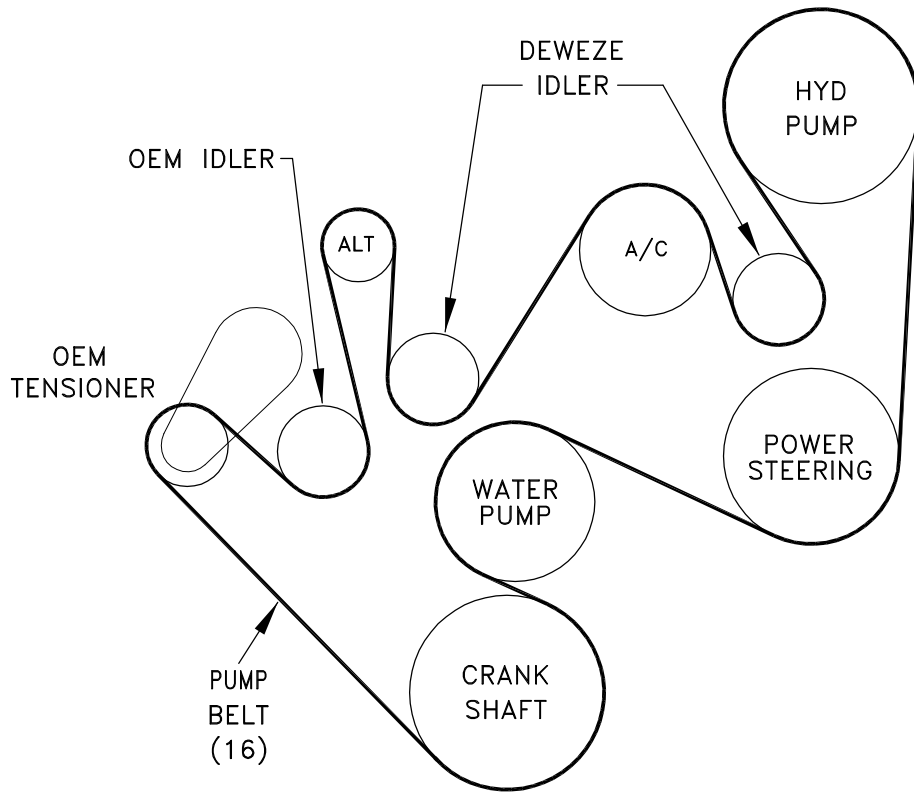
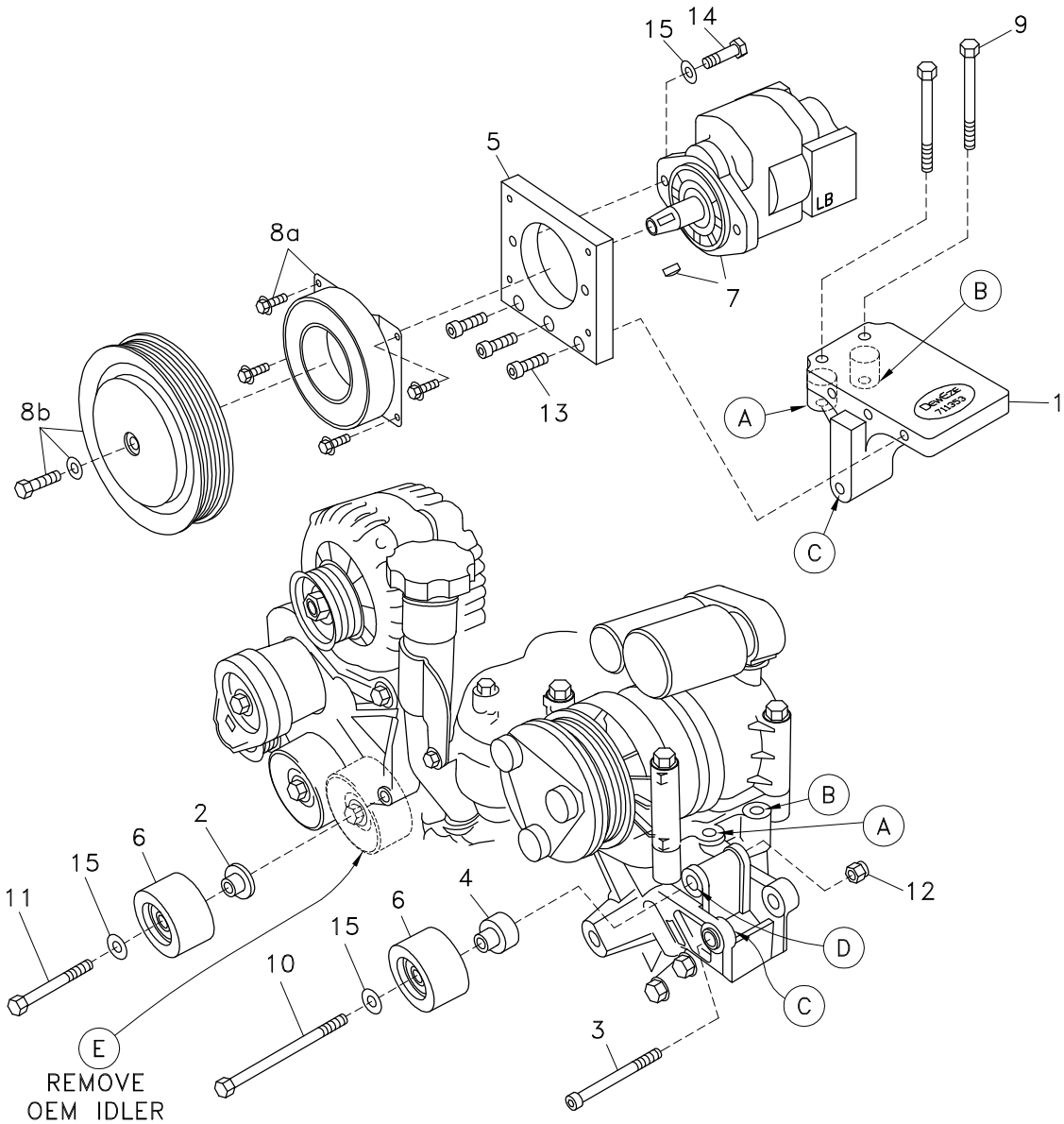
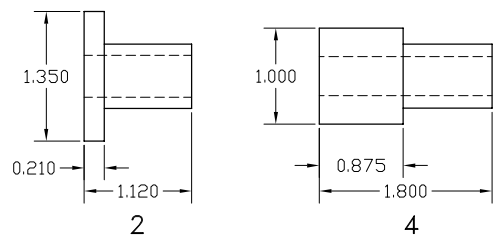


FIG. 2



IDENTIFYING THE IDLER BUSHINGS

FIG. 3



# DewEze

## Clutch Pump Kit

#700445  
Chevy 6.6L  
with A/C  
'A' mount  
2006-

## INSTALLATION INSTRUCTIONS

---

1. Disconnect the battery.
2. Remove the OEM belt. Remove the OEM idler from the alternator bracket at Location E.
3. Bolt the pump plate (5) to the base plate (1) with three 3/8 x 1 socket head bolts (13). Torque to 20 ft-lb.
4. Push the idler bushing (4) into the back (the side without the snap ring) of one of the idler pulleys (6). Insert the M10 x 120 bolt (10) through a 3/8 flat washer (15), through the idler pulley and bushing and into the hole on the air conditioner bracket at location D. Thread the M10 lock nut (12) onto bolt (10). Torque to 25 ft-lb.
5. Push the idler bushing (2) into the back (the side without the snap ring) of the other idler pulley (6). Insert the M10 x 50 bolt (11) through a 3/8 flat washer (15), through the idler pulley and bushing and into the hole on the alternator bracket at location E.
6. Insert the two M10 x 70 bolts (9) through the holes in the notched end of the base plate (1) and into the air conditioner mounting bracket at locations A and B. Torque to 25 ft-lb. Thread the M10 x 80 socket head bolt (3) into the hole at Location C and through the bottom lug of the pump bracket. Torque to 25 ft-lb.
7. Bolt pump (7) onto pump plate (5) with two 3/8 x 1 1/4 bolts (14) and two 3/8 flat washers (15). Torque to 20 ft-lb. Attach coil (8a) with four 1/4 x 1/2 flange bolts supplied with clutch. Torque these to 6 ft-lb. Attach clutch pulley (8b) to pump shaft with 5/16NF x 1 1/4 bolt and heavy washer supplied with clutch. Torque to 14 ft-lb.
8. Install the belt (16) as shown in the belt diagram (Fig. 2).
9. Connect the battery.
10. Run the engine and check for any clearance or alignment problems. Adjust as needed.