

Ford, 5.4L, 6.8L:G, 2005+, F-450, -550, A Pump, 5-9 GPM, Rear Port

Bolt Packages:

Bracket	711634	(Inc. item 9, 15, 20,21)
Idler pulley	711653	(Inc. items 10, 15)
Pulley	711651	(Inc. items 14, 15, 22)
Tensioner	None	

Tensioner Assy.	740385
Issue Date	10-22-04
Revision Date	C 12-9-05

Item Part No. Description

1.	711625	Engine bracket	14.	110689	M10 Lock washer
2.	740383	Crankshaft pulley	15.	110676	3/8 Flat washer
3.	110780	Washer, M8 x .188" thick	16.	740233	Idler pulley, 6-groove
4.	740145	Idler pulley, flat 3.75"	17.	110469	M8 x 1.25 x 20 Bolt
5.	740294	Idler pulley, flat 3.00"	18.	110703	M8 Flat washer
6.	740384	Tensioner arm	**19.	711649	Air intake support bracket
7.	*	Pump, A rear port	**20.	110122	5/16-18 x 1.25 Wiz bolt
8.	742016	Clutch	**21.	110606	5/16-18 Wiz nut
9.	110761	M8 x 1.25 x 110 Bolt	22.	110217	M10 x 1.5 x 70 Bolt
10.	110282	M10 x 1.5 x 20 Bolt	23.	120388	Adapter, 8MJIC-18 Metric 90
11.	110425	3/8-16 x 1 1/4 Bolt	24.	722005	Hose, power steering
12.	110747	M12 x 1.75 x 75 Bolt	25.	742019	Belt, Micro-V K060725
13.	OEM	Bolt			

* See pump list for sizes and part numbers.

**19. Used only on 5.4L engine.

FIG. 1
BELT DIAGRAM

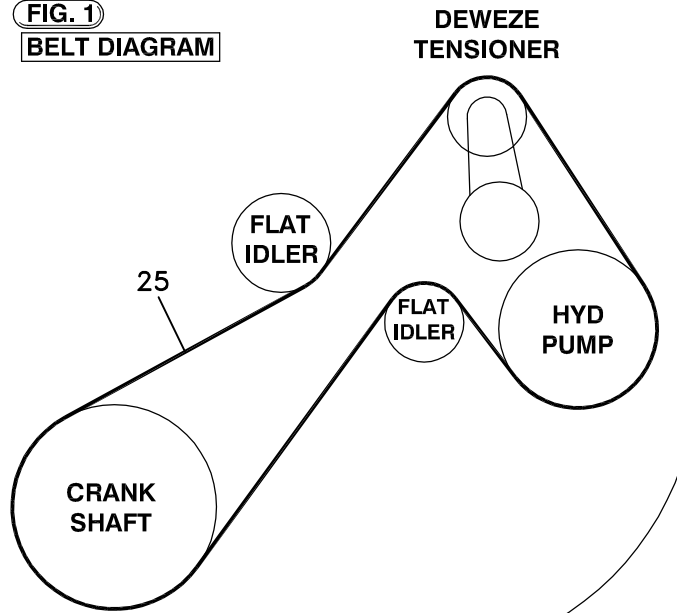
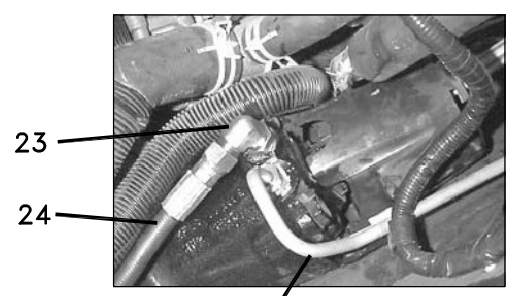


FIG. 2
POWER STEERING HOSE MODIFICATION



LINE FARTHEST FROM ENGINE IS UNMODIFIED

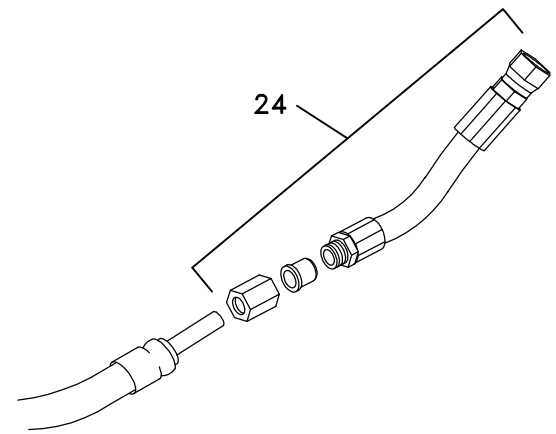
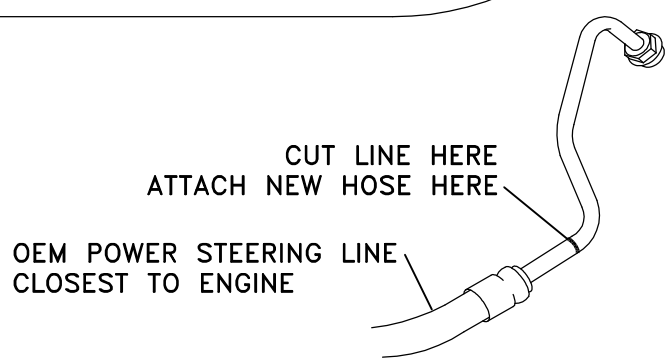
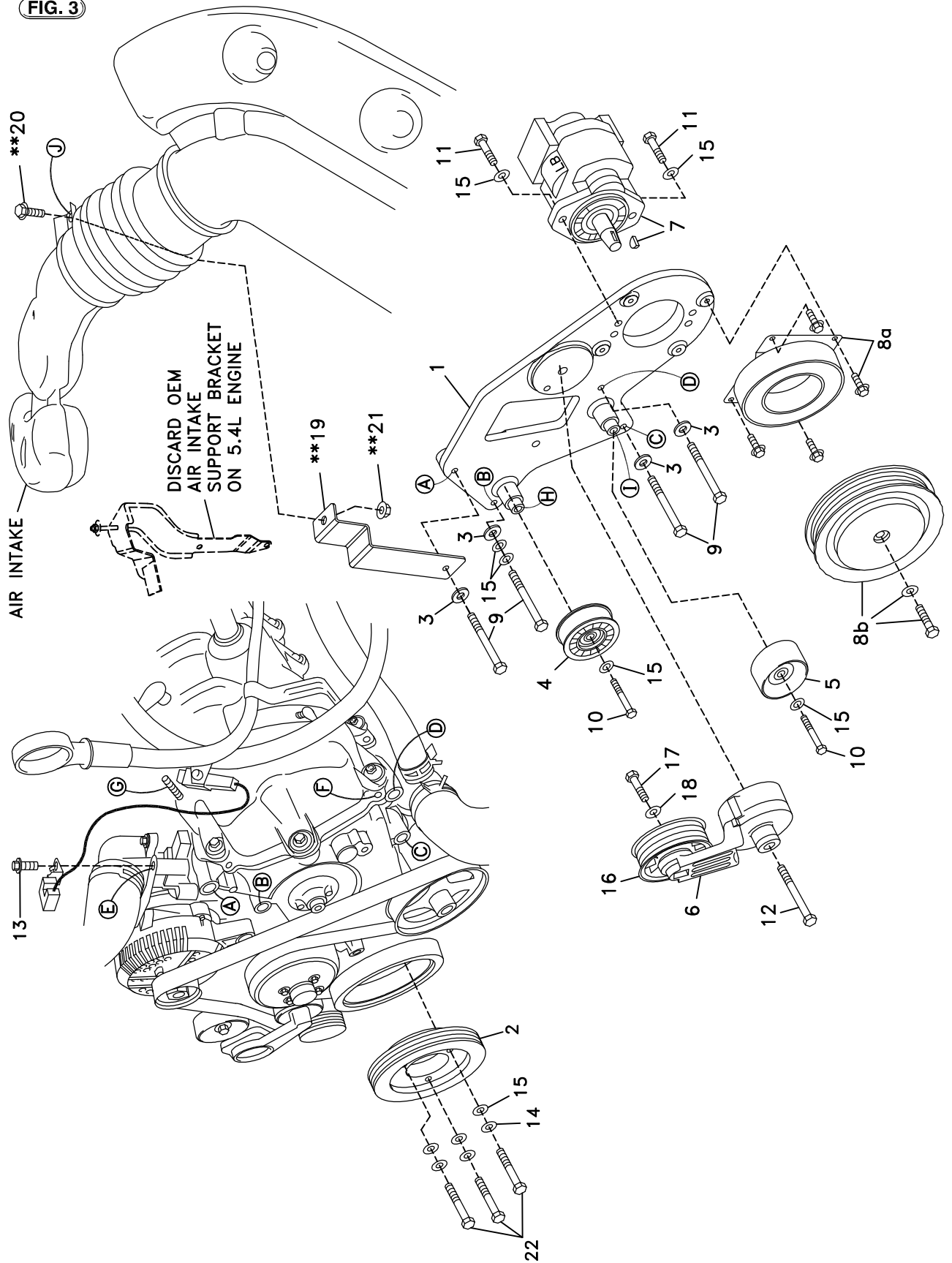


FIG. 3



DewEze

Clutch Pump Kit

Clutch Pump Kit
700433
Ford 5.4, 6.8
F-450, 550
2005+

INSTALLATION INSTRUCTIONS

1. Disconnect the battery.
2. Remove the air cleaner assembly. On the 5.4L engine only remove the OEM air intake support bracket (Fig. 2).
3. Drain the radiator. Remove the top radiator hose.
4. Remove the fan and shroud.
5. Remove the three OEM stud bolts from Locations A, C, and D. Remove one OEM bolt from Location B.
6. Remove the OEM bolt (13) from the front of the thermostat housing (Location E), place the OEM electrical wire as shown there and fasten with the OEM bolt.
7. Remove the wiring harness from the attachment points on the valve cover at the front corner (Location F) and the stud bolt under the air tube (Location G). Push the wiring harness back on top of the valve cover to clear the pump and bracket.
8. Refer to Fig. 2: Clamp off the large suction hose coming from the power steering reservoir. This will keep the fluid from running out the ports when the lines are loosened. Remove both lines from the top of the power steering box for easier access. On the hose that was closest to the engine, cut the steel line just at the start of the first bend from the end of the hose. Slide the nut, then the ferrule onto the tube and attach that to the new hose (24). Thread the adapter (23) into the steering box pointing it down toward the front of the truck. Thread the other end of the hose into the adapter. Replace the OEM line farthest from the engine without modification. Tighten all connections. Remove the clamp.
9. Attach the crank pulley (2) with three M10 x 60 bolts (10), three M10 lock washers (14), and three 3/8 flat washers (15).
10. Attach the pump (7) to the back of the pump plate (1) using two 3/8 x 1 1/4 bolts (11) and two 3/8 flat washers (15).
11. Attach the clutch coil (8a) to the front of the pump plate using the four 1/4 x 1/2 flange bolts provided with the clutch. Attach the clutch pulley (8b) to the pump shaft using the 5/16 x 1 1/4 bolt and heavy flat washer provided with the clutch.
12. Place the tensioner (6) on the pump plate using the M12 x 75 bolt (12).
13. Attach the pump plate to the engine at Locations A, B, C, and D using four M8 x 120 bolts (9) with one .188" thick washer (3) on each bolt and two standard 3/8" flat washers (15) on the bolt at Location B only. Hold the DewEze air intake support bracket (19) on top of the bracket on the hole at Location A as you bolt the pump bracket in place. Do not tighten this bolt until the air intake is reinstalled.
14. Attach the flanged plastic idler (4) to the plate with the M10 x 20 bolt (10) and 3/8 flat washer (15) at Location H. Attach the steel flat idler (5) with an M10 x 20 bolt (10) and 3/8 flat washer (15) at Location I.
15. Install the new serpentine belt (25) as shown in Fig. 1. **On the 6.8L engine, check to be sure the belt does not contact the airbox. If it does, remove the airbox and loosen the bolt where the support rod attaches to the airbox bracket. Pull the bracket toward the driver's side fender as far as it will go and tighten the bolt. Replace the airbox.**
16. Replace the fan and shroud.
17. Replace the radiator hose and the coolant.
18. Replace the air intake assembly. Line up the support bracket (19) with the mounting hole in the air intake at Location J. Attach the intake to the bracket with the 5/16 x 1 1/4 wiz bolt (20) and the 5/16 wiz nut (21). Tighten the M10 x 110 bolt at Location A.
19. Connect the battery.
20. Run the engine and check for any clearance or alignment problems. Adjust as needed.