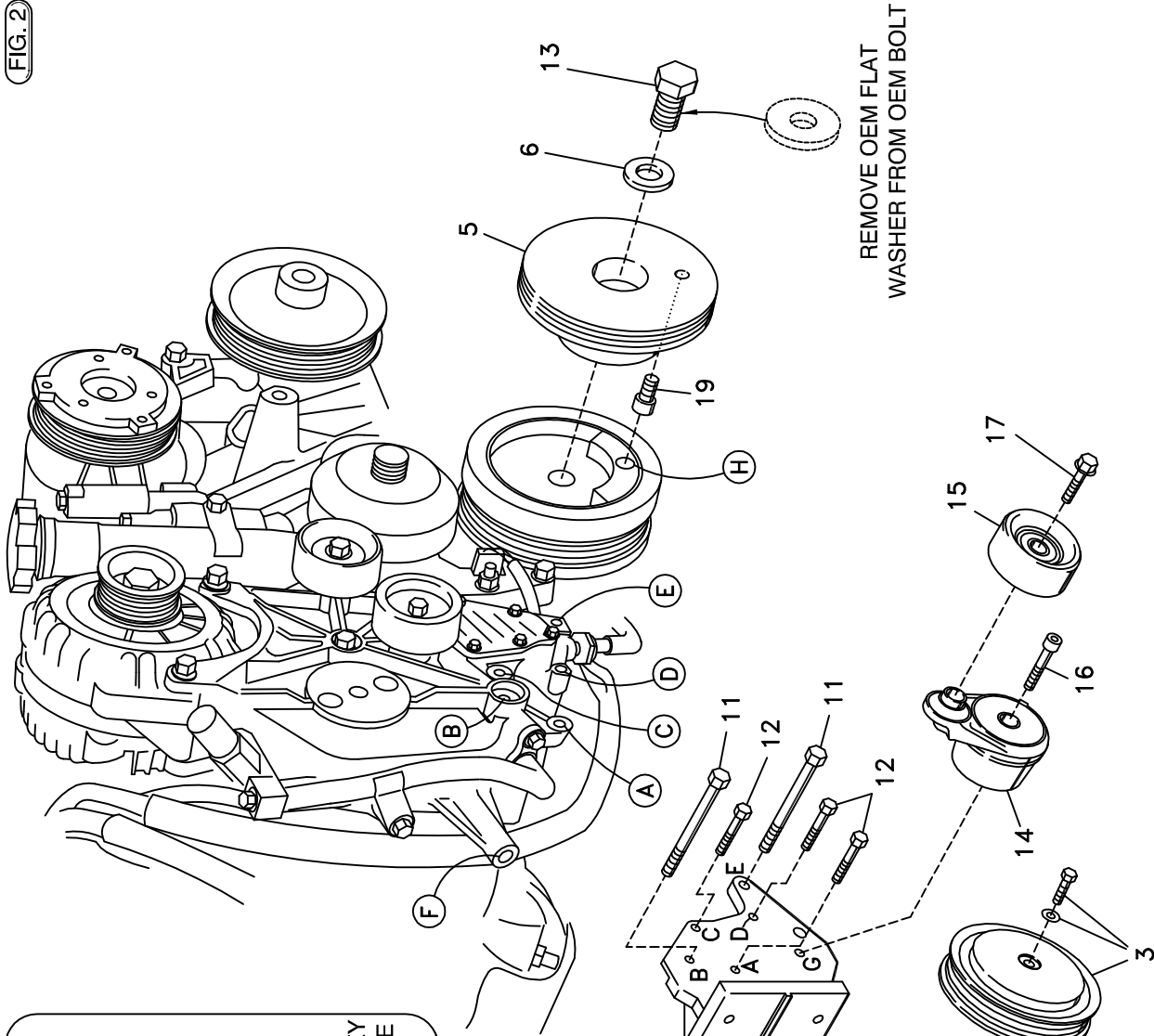
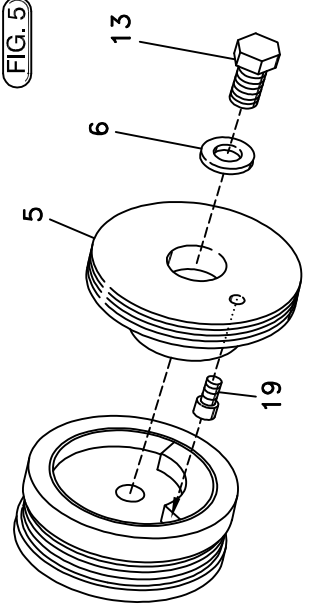


FIG. 2



REMOVE OEM FLAT WASHER FROM OEM BOLT

FIG. 5



IF THE DAMPER DOES NOT HAVE THE HOLE IN THE COUNTERWEIGHT (LOCATION H), ROTATE THE PULLEY SO THE BOLT HEAD RESTS AGAINST THE END OF THE COUNTERWEIGHT AS SHOWN HERE.

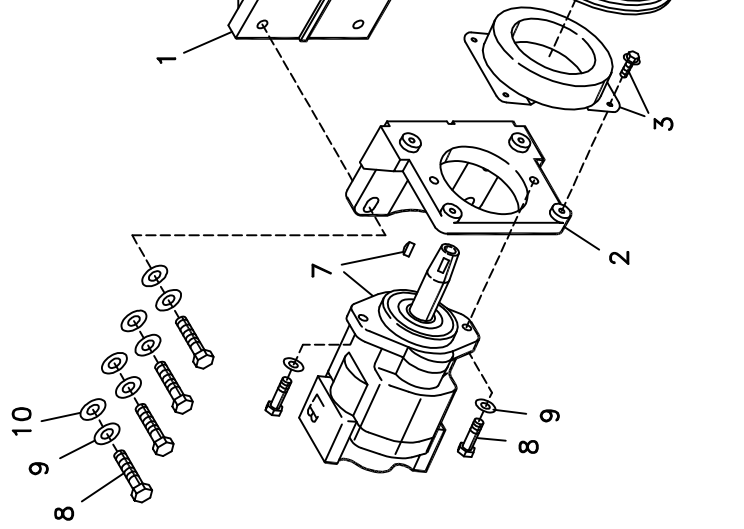


FIG. 3

**TRANSMISSION COOLER TUBE
MODIFICATION AND REPLACEMENT**

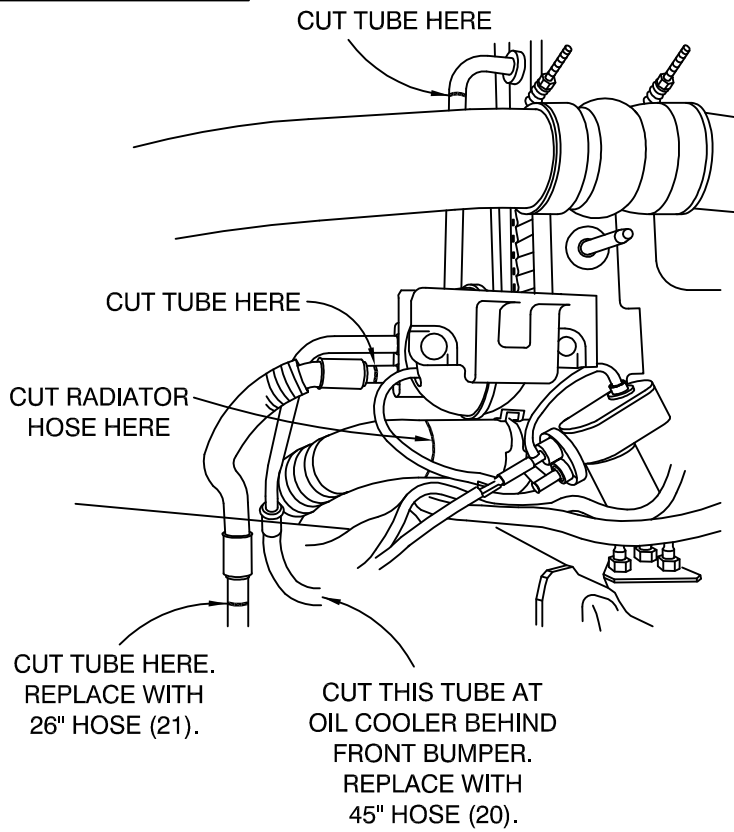
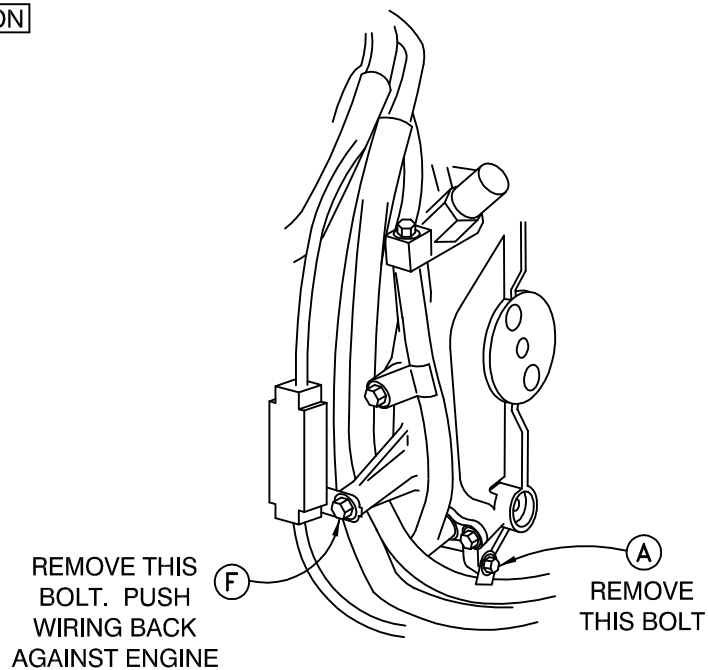


FIG. 4

WIRING RELOCATION



DewEze

Clutch Pump Kit

Kit # 700413
CHEVY/GMC 6.6L
C4500, C5500
'A' mount pump
2003-

INSTALLATION INSTRUCTIONS

1. Disconnect the battery.
2. Drain the coolant from the radiator. Remove the lower hose where it is connected to the radiator. Cut the straight section of the hose off at where the hose begins to bend (See Fig. 3). Reconnect the hose and clamp it. This is for clearance to get the hose away from the clutch pulley and belt.
3. Refer to Fig. 3 for the following: The transmission cooling lines will be in the way of the clutch pulley and need to be relocated. Cut and remove the two transmission lines at the places shown. Follow the one line to the oil cooler behind the front bumper. Cut this line at the cooler. Replace this line with the 45" hose (20). Replace the other hose with the 26" hose (21).
4. Remove the OEM bolts from Locations A through F. Push the wiring cables back against the engine so they will clear the bracket when it is bolted on (Fig. 4).
5. Mount the engine bracket (1) to the engine using the two M10 x 90 bolts (11) at Locations B and E (torque to 25 lb-ft), and the three M8 x 50 bolts (12) at Locations A, C and D (torque to 14 lb-ft).
6. Bolt pump (7) to pump plate (2) with two 3/8 x 1 1/4 bolts (8) and two 3/8 flat washers (9). Attach the clutch coil (3a) with the four supplied 1/4 x 1/2 flange bolts (3b). Mount the clutch pulley (7c) to the pump shaft with the 5/16 x 1 1/4 bolt (7d) and heavy flat washer (7e) making sure the key is in place on the shaft.
7. Mount the DewEze tensioner (14) at Location G using the 3/8 x 2 1/2 socket head bolt (16).
8. Remove the OEM bolt and large flat washer from the center of the crank balancer. If the 1/2 x 3/4 socket head bolt (19) is not in the back (the side with the hub) of the DewEze crank pulley (5), thread it in and tighten. Put the pulley in place making sure the socket head bolt goes into the hole in the balancer counterweight (Location H). If the balancer does not have a hole in the counterweight, turn the pulley counter-clockwise until the bolt bumps against the counterweight. Secure the pulley with the OEM bolt (13) and the DewEze flat washer (6). Torque bolt to 260 lb-ft.
9. Install the belt (20) as shown in the diagram (Fig. 1).
10. Replace the coolant in the radiator. Connect the battery cable.
11. Run the engine and check for any clearance or alignment problems. Adjust as needed.